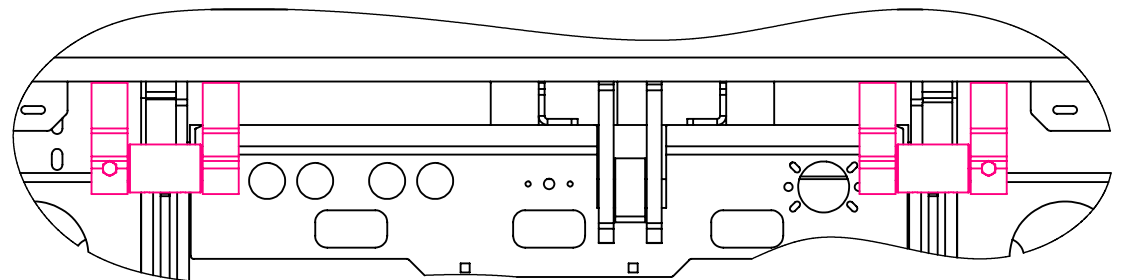
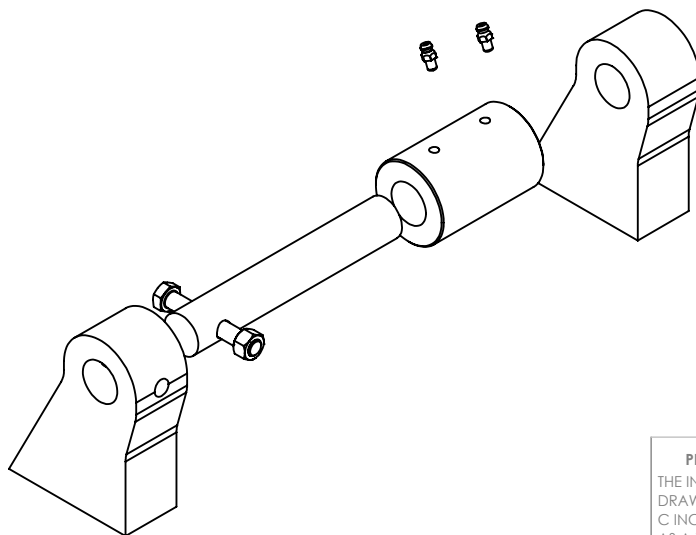
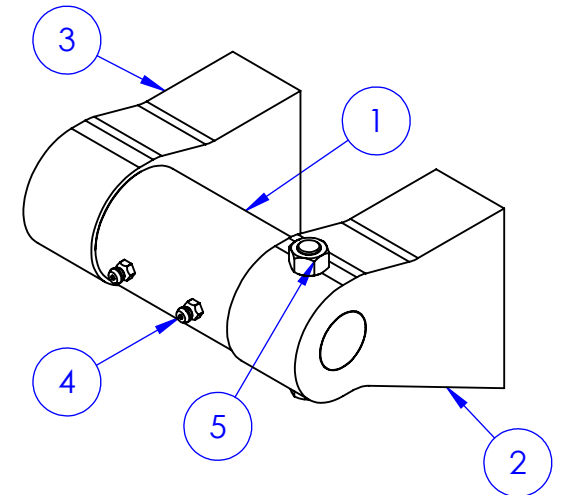
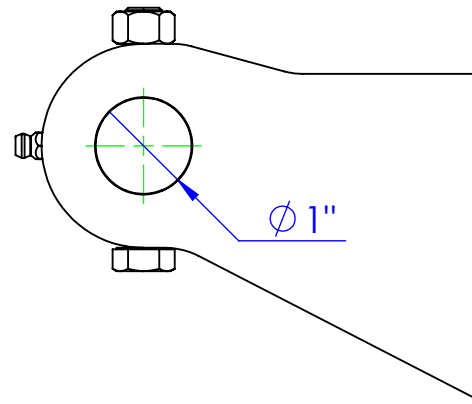
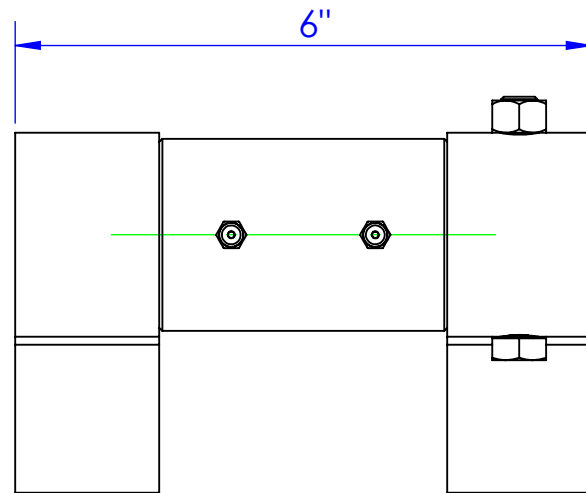


ITEM NO.	PART NUMBER	DESCRIPTION	DRAWING #	QTY.
1	FP-MHX0-100	BUSHING, MAIN HINGE	10-2100	1
2	FP-SPXO-150	MAIN HINGE SIDE PLATE REAR ASM	10-1406	1
3	FP-SPXO-151	MAIN HINGE SIDE PLATE REAR ASM W/OUT HOLE	10-2411	1
4	HD-ZG .25-28 STR	GREASE ZERK 1/4-28 STRAIGHT	STOCK	2
5	RE-PN-1X601	PIN, HINGE, MAIN, HYDRA BED	10-1701	1

REVISIONS			
REV.	DESCRIPTION	DATE	APPROVED
A	UPDATED TO MATCH 3D MODEL	3/17/2014	



**PROPRIETARY AND CONFIDENTIAL**  
THE INFORMATION CONTAINED IN THIS  
DRAWING IS THE SOLE PROPERTY OF TRIPLE  
C INC. ANY REPRODUCTION IN PART OR  
AS A WHOLE WITHOUT THE WRITTEN  
PERMISSION OF TRIPLE C INC. IS PROHIBITED.

DIMENSIONS ARE IN INCHES TOLERANCES: FRACTIONAL $\pm 1/16$ ANGULAR: MACH $\pm 1$ BEND $\pm$ TWO PLACE DECIMAL $\pm 010$ THREE PLACE DECIMAL $\pm 005$	
MATERIAL	--
DO NOT SCALE DRAWING	

NAME	DATE
DRAWN <b>HEATH</b>	3/17/2014
PART # <b>RE-KHR-600</b>	
ASM #	
COMMENTS: <b>KIT HINGE REPAIR HYDRA BED</b>	

P.O. BOX 248, SABETHA, KS 66534			
<b>TRIPLE C</b> INC.			
SIZE <b>A</b>	DWG. NO. <b>10-1715</b>	REV. <b>A</b>	
SCALE: 1:2	WEIGHT: 11.98	SHEET 1 OF 1	